

# Welcome to Sparrow Lake Camp!

OWNED AND OPERATED BY  
TORONTO HOME MISSIONS COUNCIL  
The United Church of Canada



... From 1941 onward SPARROW LAKE CAMP has been on a self-sustaining basis. . . Fees cover all operations, including depreciation, improvements and replacements. . .

... The RECREATION HALL (formerly an R.C.A.F. building from Fleet St.) was erected in 1946, and electrical refrigeration installed in the Dining Hall at the same time. . .

... The CHAPEL-IN-THE-PINES, LEADERS' CABIN, and the CLINIC have been built from the proceeds of various years' FAIRS held by the GIRLS' CAMPS. . .

... Bunks have been installed in the large, roomy sleeping cabins. . . Maximum capacity, including director and counsellors, is 154. . .

... Other improvements are being planned by the SPARROW LAKE CAMP BOARD (appointed by the Toronto Home Missions Council of The United Church, which owns the Camp). . .

... Because of its non-profit character the fees at SPARROW LAKE CAMP are much lower than at most private camps. . . Typical rates in a recent year:

JUNIOR BOYS (10 to 12) - 13 Days	---	\$19.00
SENIOR BOYS (13 to 16) - 13 Days	---	20.00
JUNIOR GIRLS (10 to 12) - 16 Days	---	23.00
SENIOR GIRLS (13 to 16) - 15 Days	---	23.00
ADULT YOUNG PEOPLE (20 to 35) - 16 Days	---	31.75

... Group rates on the railway are available to Campers travelling from Toronto. . . Rate is one-way fare, plus a tenth, for round-trip ticket.

... Registrations are accepted from April 1st, and should be made through the Camp Office as early as possible. . .

SPARROW LAKE CAMP BOARD (FRED E. SMALE, Chairman)  
CAMP OFFICE—139 JARVIS ST., TORONTO (ELgin 9022)  
REV. J. C. TORRANCE, B.A., Secretary and Camp Superintendent

## SOME INFORMATION FOR VISITORS



WE HOPE you will enjoy your visit to SPARROW LAKE CAMP. We would suggest that you proceed along the trail from MASSEY LODGE, past the RECREATION HALL and the CLINIC until you come to the CAMPERS' CABINS. . .

... Please do not enter the cabins unless a counsellor or guide is present. . . The small cabin just before you reach Cabin #6 is the CAMP DIRECTOR'S headquarters. . . Near the lake you will see the COUNCIL RING and TEPEE, while the FLAGPOLE is the assembly-point for campers. . .

... The TENNIS COURT is a popular spot, while the VOLLEY BALL COURT is equally attractive. . . Beyond Cabin #13 you will see the DINING HALL (we suggest that you look in through the doors at the lake side of the Hall, please do not enter the Dining Hall). . .

... Continue along the rocky trail, past the Pump House, and you will come to the CHAPEL IN THE PINES (please be quiet -- a service may be in progress). . . Beyond the CHAPEL are rocks used for shore suppers, etc., and if you keep on toward DUCK BAY you will reach VESPER ROCKS which are used for sunset worship periods.

... Turning to the left you will find a trail which leads you back through the SPORTSFIELD --- and on the lake side you will find two trails, the right one leads to the main road, while the left trail will bring you back to Camp between Cabin #1 and the CLINIC. . .

... Beyond MASSEY LODGE (with large veranda) you will find CRAFT HOUSE, then the BOATHOUSE and if you follow the trail around to CRANBERRY BAY you will discover several delightful spots before you reach cranberry marsh.

... PLEASE DO NOT SMOKE ON CAMP GROUNDS if a BOYS' or GIRLS' CAMP is on the property. . . . During YOUNG PEOPLE'S CAMP periods smoking is permitted --- although it is prohibited in the dining and recreation halls at any time.

... The property up to Cabin #1, including the LODGE and CRAFT HOUSE was originally the summer home of the Massey Family --- who gave it to the Methodist Church in 1905 for camping purposes.

... Remainder of property was the summer residence of the Langmuir Family, and was purchased by the Methodist Church in 1920 --- thus making the Camp 250 acres in area. . . .

... Thirteen sleeping cabins and the dining hall were erected at a cost of \$22,000.00. . .

... From 1905 until 1940 the Camp was used for Fresh Air purposes in connection with Fred Victor Mission and other downtown Toronto churches. . .

... In 1941 all Fresh Air Camp work was consolidated in the LAKE SCUGOG CAMPS (where the United Church has 300 acres, with buildings to accommodate 200 campers at one time).





**SWIMMING:** Massey Beach is the finest bathing spot in the whole area—fine sand, gently sloping shore for the younger campers, good diving tower and off-shore raft for experienced swimmers.

**BOATING:** Rowboats are available for campers who can pass necessary requirements (no charges for boats). Launch trips, at reasonable rates, are arranged to points of interest on Sparrow Lake or Severn River.

**MASSEY LODGE:** Originally the summer home of the Massey family, this building is now a social centre for the camp.

**CLINIC:** A new building, staffed by a trained nurse, to provide first-aid for minor injuries or occasional sickness.



**CRAFT COTTAGE:** A historic old building, now used to house handicraft and hobby equipment for all types of camps.

**TENNIS COURT** An excellent concrete court, surrounded by high wire fence, is popular with tennis enthusiasts.

**VOLLEYBALL:** A new grass court provides an outdoor setting for group competitions.

**PING PONG, BADMINTON, SHUFFLEBOARD, etc.:** Ample facilities for recreation in the new Recreation Hall.

**SOFTBALL and OTHER SPORTS:** Splendid sports field has been cleared in centre of camp, about 100 yards behind cabins.



**CHAPEL-IN-THE-PINES:** Toward Duck Bay is located this picturesque open-air rustic chapel for group worship or individual meditations.

**MAIL:** It is important that mail be addressed to campers at SPARROW LAKE CAMP, PORT STANTON, ONT. . . . Mail just addressed to "Sparrow Lake" will go to opposite side of lake and be readdressed to camp via Toronto, usually arriving three or four days later!

**CAMPERS' CABINS:** Thirteen roomy cabins (18' x 27' in size) provide sleeping accommodation. Cabins are roomy and airy, with eight bunks plus two to four camp cots, giving ample space for each camper or counsellor. . . . Mattresses are provided—but campers must bring own sheets, blankets and pillows.



#### WHAT TO BRING TO CAMP:

**CLOTHING:** Comfortable camp clothes, sweater or warm coat, running or camp shoes, heavy shoes for hiking, raincoat or slicker, bathing suit and cap.

**BEDDING:** Sufficient blankets or rugs to keep you warm. Pillow or cushion. . . . Motor rug or ground sheet . . . Only bunks or cots, with mattresses, are supplied by camp.

**PERSONAL ARTICLES:** Towels, soap, wash cloth, tooth brush, hair brush and comb, etc.

**FOR ENTERTAINMENT:** Tennis or badminton racquet, balls or birds, flashlight (don't forget it), camera and films, Bible, other interesting books, musical instruments (if you play), stunt materials, etc.



\* Do you know that The United Church of Canada operates a popular summer camp on the shores of Sparrow Lake? . . . It occupies 250 acres of well-wooded land, and has a sandy bathing beach that is unique in all Muskoka.

\* Only a fraction of the property has been cleared—leaving ample forest space for hikes, nature study and woodcraft groups, etc.

\* The Camp is owned by The Toronto Home Missions Council and is operated by the Sparrow Lake Camp Board (a group of experienced camp leaders), ably assisted by advisory committees for the boys', girls' and young people's camps.

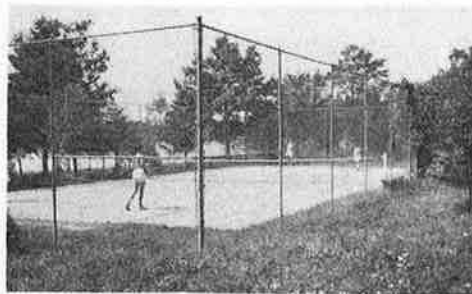
\* Low-cost vacations, under Church supervision, are made available to the boys, girls and adult young people from the various churches in the three Toronto presbyteries who might not be able

(Left) CAMP DINING HALL, 50 feet by 40 feet, with great stone fireplace . . . Seats 160 campers . . . Modern kitchen and electric refrigeration. (Right) NEW RECREATION HALL, for night-time and rainy-day programs. 90 feet by 49 feet, with clear floor 75 feet by 28 feet for recreation, play parties, basketball, badminton, etc. . . . Stage 28 feet by 15 feet . . . Space for ping-pong, shuffleboard, etc. (Below) CONCRETE TENNIS COURT, surrounded by 12-foot link-wire fence.

to afford holidays at privately-operated camps.

\* The Camp is self-sustaining . . . No funds from the United Church or other sources are used in its operations . . . Each camper must pay his or her full share of the operating and maintenance cost, although rates are kept as low as possible.

\* Each camping group during the season is directed by an experienced Party Leader, assisted by a carefully chosen staff of volunteer Counsellors . . . A well-balanced program of land and water recreation, study-groups, interest projects, and evening enter-



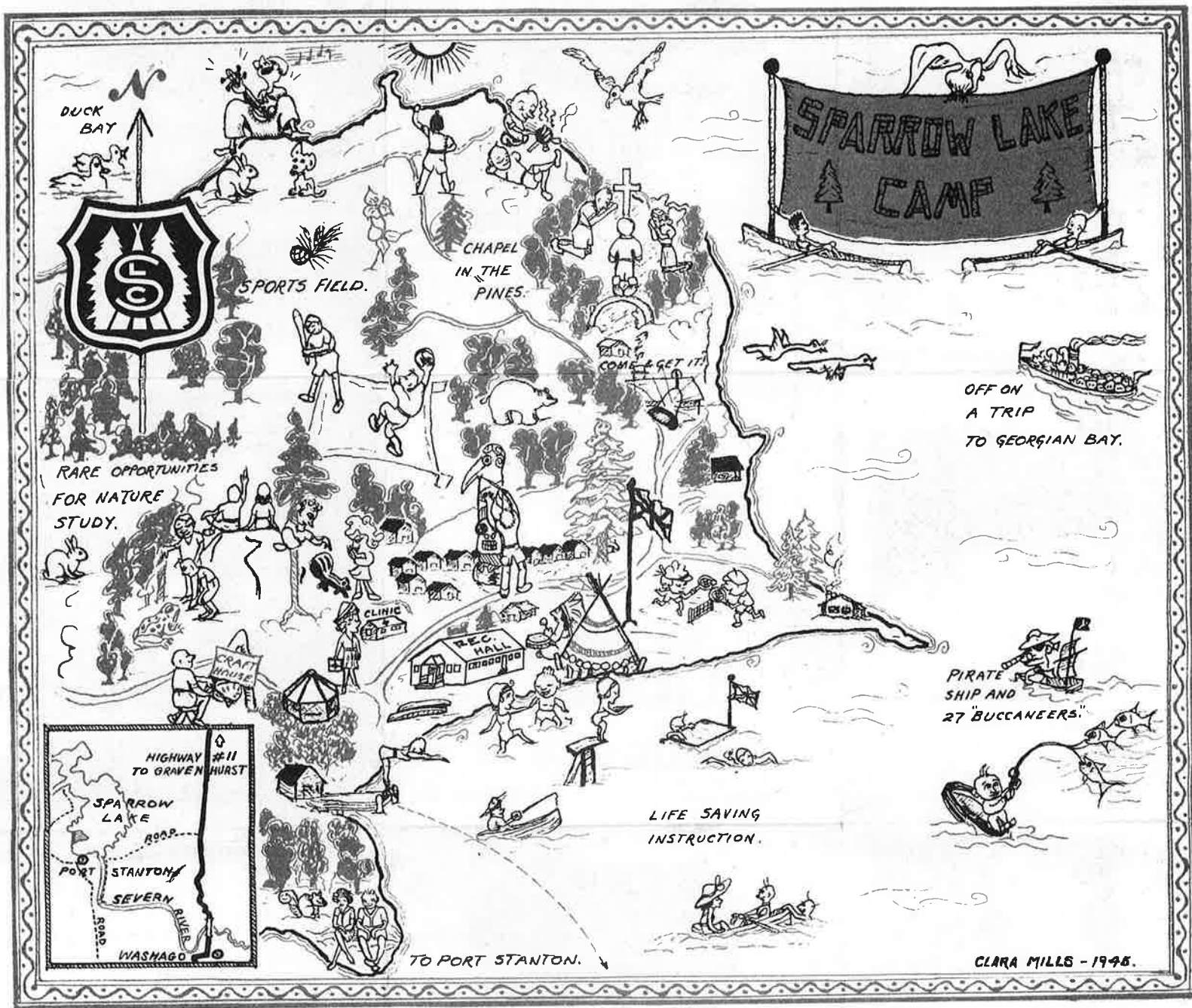
tainment is provided for and by the campers.

\* The Camp Superintendent, Resident Housekeeper and Camp Nurse pay particular attention to the accommodation, meals and health of the campers.

\* Most of the camp parties travel by train from Toronto to Sparrow Lake (main line of C.N.R.), thence by launch across to Camp . . . This enables the group to get acquainted en route . . . Special rates (for train, launch and baggage) may be arranged through the Party Leaders.

\* More and more campers, their parents and their friends, are becoming interested in Sparrow Lake Camp each year.

\* For further information write to Sparrow Lake Camp, 139 Jarvis Street, Toronto, Ont. (Phone Elgin 9022) . . . Rev. J. C. Torrance, B.A., is Camp Superintendent.



DUCK BAY



SPORTS FIELD.

CHapel IN THE PINES.



OFF ON A TRIP TO GEORGIAN BAY.

RARE OPPORTUNITIES FOR NATURE STUDY.

CLINIC

REC. HALL

CRAFT HOUSE

PIRATE SHIP AND 27 "BUCCANEERS."



HIGHWAY #11 TO GRAVEN HURST

SPARROW LAKE

PORT STANTON

SEVERN RIVER

WASHAGO

LIFE SAVING INSTRUCTION.

TO PORT STANTON.

CLARA MILLS - 1948.